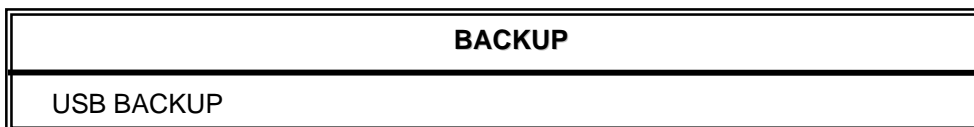


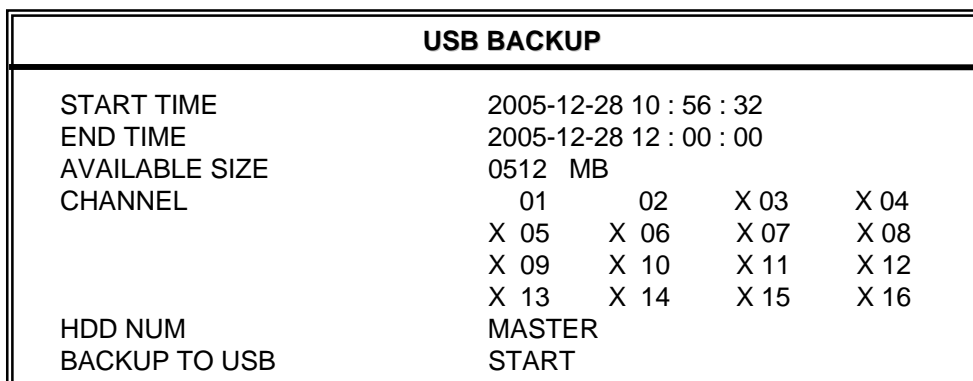
4.13 ADVANCE MENU __ BACKUP

- 16CH / 8CH / 4CH
- 16CH (D) / 8CH (D) / 4CH (D)

Move the cursor to the “BACKUP”, and press “ENTER”, then the screen will show the following options.



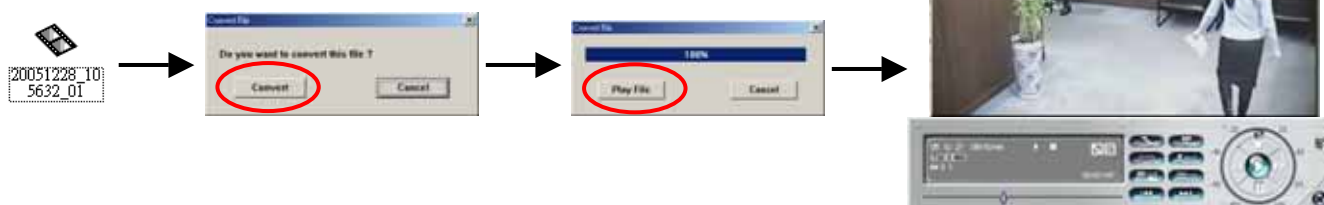
Select “USB BACKUP” and then press “Enter”.



- 1) START TIME:
Select the start time of the backup.
- 2) END TIME:
Select the end time of the backup.
- 3) AVAILABLE SIZE:
The information of the USB available capacity.
- 4) CHANNEL:
Select channels by pressing “ENTER” button to change the symbol in front of the channel number. Symbol “X” means that this channel is not selected. Symbol “ ” means that this channel is selected.
- 5) HDD NUM:
Choose the HDD.
- 6) BACKUP TO USB:
Press “ENTER” to start backup the chosen file to USB.

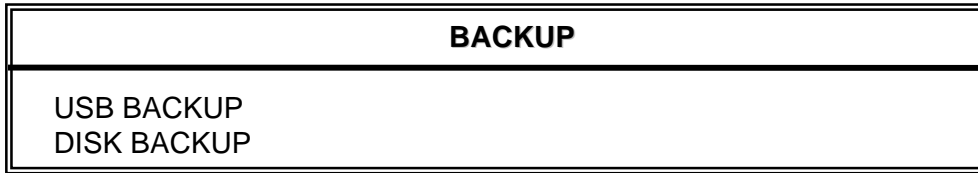
NOTE:

- ① The USB format must be “FAT 32”.
- ② If the USB is not supported by the DVR, then the “USB ERROR” message will be shown on the screen.
- ③ It is suggest that clear all the files in the USB before you backup files in your USB.
- ④ The file type of the backup files could use the licensed software to view the playback. Or convert to AVI format and playback with other software (such as Media Player or RealPlayer).

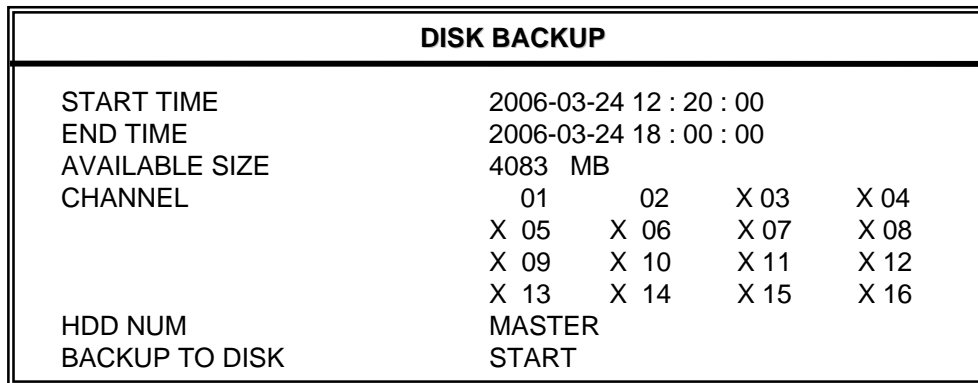


● 16CH (D) / 8CH (D) / 4CH (D)

Move the cursor to the “BACKUP”, and press ”ENTER”, then the screen will show the following options.



Select “DISK BACKUP” and then press “Enter”.



- 1) Press “ + ” and “ - ” buttons to open the **DVD / CD WRITER**. Put the **DISK** into **DVD / CD WRITER**, and press “ + ” and “ - ” buttons again to close. **(NOTE: Use DVD-R DISK only)**
- 2) Go to “DISK BACKUP” menu and set the start time, end time, channels and HDD number.
Note:
Select channels by pressing “ENTER” button to change the symbol in front of the channel number. Symbol “X” means that this channel is not selected. Symbol “ ” means that this channel is selected.
- 3) After setting up the backup information, move the cursor to “START”, and press “ENTER”. While the files are backup to **DISK**, users will see the backup completed percentage on the screen.
- 4) After backup files to **DISK**, “DISK BURN FINISH” will prompt on the screen. Press “ + ” and “ - ” to take out the **DISK** from **DVD / CD WRITER**.
- 5) Put **DISK** into the **DVD / CD -ROM** of PC. (O/S system: Windows XP, and Windows2000). And then double click the file → Convert the file → Play the backup file at PC Side.

